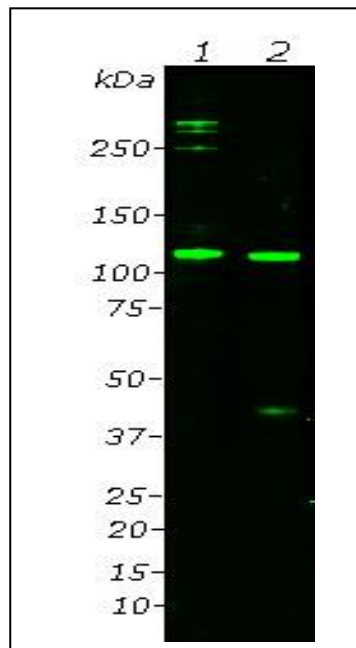


**Catalogue# CPCA-C3-NET: Chicken Polyclonal Antibody against Netrin Domain of Complement Component 3**

**Immunogen:** Complement component 3, often simply called C3, is the third protein in the complement system. The complement system is a part of the immune system to “complement” the ability of antibodies and phagocytic cells to clear pathogens such as bacteria and viruses from organism, trigger inflammation and remove debris from cells and tissues (1). C3 plays a central role in complement activation, and is involved in both the [classical](#) and [alternative pathway](#). C3 is synthesized as an intracellular precursor (pro-C3) of 185 kDa which is processed by proteolytic cleavage into two large chains called the  $\alpha$  subunit (115 kDa) and the  $\beta$  subunit (70 kDa) which are however linked by a disulfide bond (2).

C3 activation involves further cleavage by C3 convertase to produce C3a (9 kDa) and C3b (the remaining 176 kDa of the  $\beta$  subunit and truncated  $\alpha$  subunits). C3a is released into the surrounding fluids and can bind to receptors on basophils and mast cells triggering them to release their vasoactive contents (e.g., histamine). Because of the role of these materials in anaphylaxis, C3a is called an anaphylatoxin, and the N-terminal region of the subunit is referred to as the anaphylatoxin domain. In blood, C3a may be further cleaved by carboxypeptidase to produce C3adesArg or ASP (acylation-stimulating protein), which acts as a paracrine signal to increase triglyceride synthesis in adipocytes (3). C3adesArg have been demonstrated to be present at increased levels in patients with obesity, diabetes mellitus type 2 and coronary artery disease (4,5,6). C3b is the main effector molecule of the complement system, expressing multiple binding sites for other complement components such as C5, properdin, factor B, factor H and certain membrane proteins such as MCP). Binding these proteins to C3b leads either to amplification of C3 convertase, or initiation of Membrane Attack Complex (MAC). C3b also serves as an opsonizing agent to bind to the pathogen and target it for destruction by phagocytes. On the other hand, binding of C3b to complement component, factor I and a co-factor, inactivates C3b to iC3b and release C3f (2 kDa). iC3b can further be cleaved to form C3c, C3dg which further produces C3d and C3g (3). Overall, C3 promotes phagocytosis, supports local inflammatory responses against pathogens, and instructs the adaptive immune response to select the appropriate antigens for a humoral response (6). More recently, C3 has been suggested to have a pathophysiological role in Alzheimer’s and other neurodegenerative disorders (7). In clinical practice the level of (C3) in serum and CSF can be used to help identify immunological disorders, especially those associated with deficiencies of complement components.



Western blot analysis of CPCA-C3-NET on human serum. 0.2  $\mu$ g human C3 protein (lane 1), 20  $\mu$ g normal human serum proteins (lane 2) were blotted with CPCA-C3-Net at 1:10,000. The CPCA-C3-Net antibody binds strongly and cleanly to a band at about 115 kDa which represents the intact  $\alpha$  subunit of C3 and proteolytic band at 40kDa. Bands at 190 kDa and above are likely the pro-C3 and its glycosylated form.

**Antibody characteristics:** CPCA-C3-NET was raised against the recombinant netrin domain of human C3 expressed in and purified from *E.Coli*. The antibody works on human sample by western blot and Elisa. This antibody is an IgY prep at a total protein concentration of 17 mg/ml. The preparation contains 0.02% sodium azide as a preservative. Store at 4°C. For safest long-term storage, maintain aliquots at -20°C. Avoid repeated freeze-thaw cycles.

**Suggestions for use:** The antibody is provided as IgY preparation. We recommend trying the antibody at 1:5,000 for western blotting purposes.

**Limitations:** This product is for research use only and is not approved for use in humans or in clinical diagnosis.

#### References:

1. Janeway CA J, Travers P, Walport M et al. The complement system and innate immunity. Immunobiolog. [The Immune System in Health and Disease. 5th edition \(2001\)](#).
2. Brade V, Hall RE, and Colten HR. Biosynthesis of pro-C3, a precursor of the third component of complement. [J. Exp. Med. 146:759-765 \(1977\)](#).
3. Xia Z, Stanhope KL, Digitale E, Simion OM, Chen L, Havel P, Cianflone K. Acylation-stimulating Protein (ASP)/Complement C3adesArg Deficiency Results in Increased Energy Expenditure in Mice\* [J Biol Chem. 279:4051-7 \(2004\)](#) .
4. Maslowska M, Vu H, Phelis S, Sniderman AD, Rhode BM, Blank D, Cianflone K. Plasma acylation stimulating protein, adipin and lipids in non-obese and obese populations. [European Journal of Clinical Investigation 29:679-86. \(1999\)](#).
5. Koistinen HA, Vidal H, Karonen SL, Dusserre E, Vallier P, Koivisto VA, Ebeling P. Plasma Acylation Stimulating Protein Concentration and Subcutaneous Adipose Tissue C3 mRNA Expression in Nondiabetic and Type 2 Diabetic Men". [Arteriosclerosis, Thrombosis, and Vascular Biology 21\(6\):1034-9 \(2001\)](#).
6. Cianflone K, Zhang XJ, Genest J Jr, Sniderman A. Plasma acylation-stimulating protein in coronary artery disease. [Arterioscler Thromb Vasc Biol.17:1239-44 \(1997\)](#).
7. Wang Y, Hancock AM, Bradner J, Chung KA, Quinn JF, Peskind ER, Galasko D, Jankovic J, Zabetian CP, Kim HM, Leverenz JB, Montine TJ, Ghingina C, Edwards KL, Snapinn KW, Goldstein DS, Shi M, Zhang J. Complement 3 and Factor H in Human Cerebrospinal Fluid in Parkinson's Disease, Alzheimer's Disease, and Multiple-System Atrophy. [The American Journal of Pathology, Vol. 178:1509-16 \(2011\)](#)

©EnCor Biotechnology Inc. January 27, 2016.