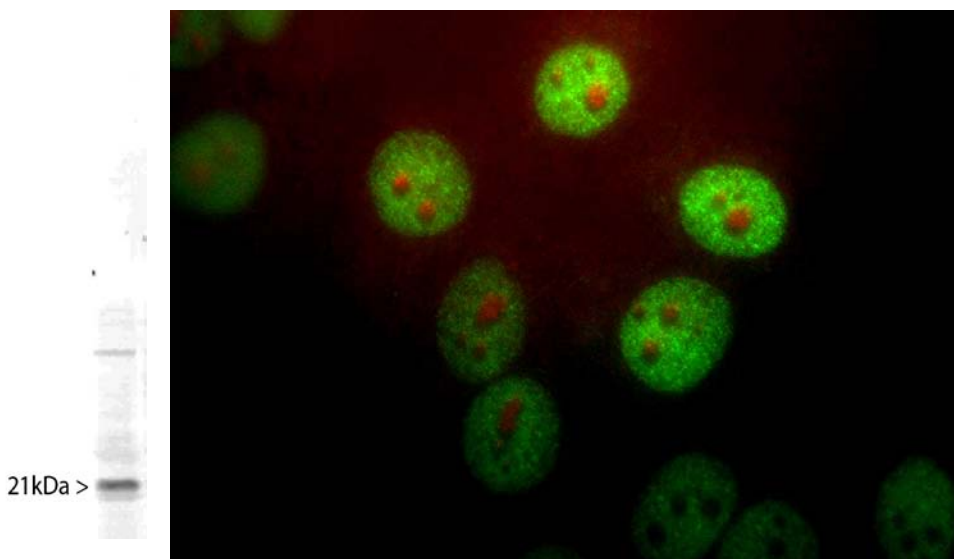


Catalogue CPCA-Pin1: Chicken Polyclonal Antibody to Pin-1

The Immunogen: Pin-1 is a the peptidylprolyl cis/trans isomerase enzyme which is responsible, as its name suggests, for flipping the proline ring from the cis to the trans conformation. This enzyme is heavily upregulated in tumor cells, so that antibodies to this protein can be used as tumor markers. Pin-1 protein is concentrated in the nucleus in small punctate structures and is particularly obvious in tumor cells. The [HGNC](#) name for this protein is [Pin-1](#).

Left: Western blot of whole HeLa cell homogenate stained with CPCA-Pin1, at dilution of 1:10,000. A prominent band running with an apparent SDS-PAGE molecular weight of ~21kDa corresponds to Pin1. **Right:** HeLa cells stained with CPCA-Pin-1 antibody to Pin-1 (1:1,000 dilution, green) and EnCor's monoclonal to fibrillarin, [MCA-38F3](#) (red). Pin-1 stains the nuclear matrix and, much more faintly, the cytoplasm. The fibrillarin antibody marks nucleoli.



Antibody Characteristics: Antibody was raised in chicken against recombinant full length Pin-1 purified from *E. coli*. This antibody is an IgY preparation, with total protein content about 30mg/ml. The preparation contains 10mM sodium azide as a preservative. This antibody was generated in chicken by standard procedures and immunoglobulin was extracted from egg yolk. The resulting polyclonal antibody belongs to the IgY subclass. This is the chicken homologue of mammalian IgG and can be used in the same general way, with the caveat that this type of antibody does not bind either Protein A or Protein G. Suitable second antibody reagents can be obtained from many vendors including Molecular Probes and Sigma-Aldrich Store at 4°C or -20°C. Avoid repeat freezing and thawing.

Suggestions for use: Try at dilutions of 1:500 to 1:1,000 for immunofluorescence, and 1:5,000 for ABC or other enzyme linked immunocytochemical procedures. For western blots try at 1:10,000.

References:

1. Lu KP, Hanes SD and Hunter T. A human peptidyl-prolyl isomerase essential for regulation of mitosis. [Nature 380 544-547, \(1996\)](#).

Limitations: This product is for research use only and is not approved for use in humans or in clinical diagnosis.