

**Ordering Information**  
 Web [www.encorbio.com](http://www.encorbio.com)  
 Email [admin@encorbio.com](mailto:admin@encorbio.com)  
 Phone 352-372-7022  
 Fax 352-372-7066

**HGNC Name:** NA  
**UniProt:** G2WEN9  
**RRID:** AB\_2298370  
**Immunogen:** Yeast nuclear preparation  
**Format:** Concentrated hybridoma tissue culture media plus 5mM NaN<sub>3</sub>  
**Storage:** Store at 4°C for short term, for longer term at -20°C. Avoid freeze/thaw cycles.  
**Recommended dilutions:**  
 WB 1:500, IF/ICC 1:1,000

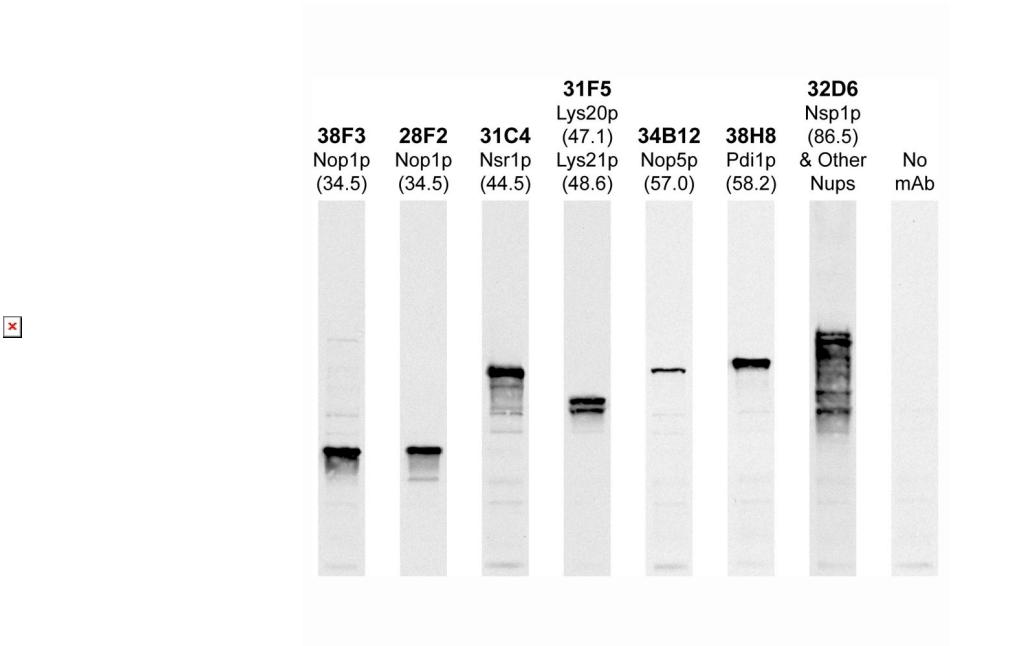
**References:**

1. Lin JJ and Zakian VA. Isolation and characterization of two *Saccharomyces cerevisiae* genes that encode proteins that bind to (TG1-3)*n* single strand telomeric DNA in vitro. *Nucleic Acids Res.* 22:4906-13 (1994).

# Nsr1p Mouse Monoclonal Antibody

# MCA-31C4

| Applications | Host  | Isotype | Molecular Wt. | Species Cross-Reactivity |
|--------------|-------|---------|---------------|--------------------------|
| WB, IF/ICC   | Mouse | IgG1    | 44.5Da        | Sc                       |



Western blots of whole yeast protein extracts with a collection of EnCor antibodies. The blot for MCA-31C4 is in the indicated lane, and the number indicates the SDS-PAGE molecular weight in kilodaltons.

**Background:**

Nsr1p is localized in the nucleolus and binds to telomeric single-stranded oligonucleotide repeat sequence of the type (TG1-3)*n*. It has a role in ribosomal RNA maturation and possibly in transport of proteins into the nucleus.

MCA-31C4 was isolated during a screen for monoclonal antibodies reactive with yeast nucleolar proteins. We determined the specificity by screening a yeast genomic library expressed as β-galactosidase fusion proteins in bacteriophage λgt11. Two individually isolated, different positive clones were found. Sequencing revealed that in both clones β-galactosidase was fused at the EcoRI site to the amino acid sequence beginning with ...EFEH, corresponding to amino acids 190 and onwards in Nsr1p. This peptide is ~20 amino acids into the first RRM domain, so MCA-31C4 reacts with an epitope in the C-terminal 55% of Nsr1p. The antibody is provided as sterile-filtered cell culture fluid from an Integra CL-350 biochamber plus sodium azide.

FOR RESEARCH USE ONLY. NOT INTENDED FOR DIAGNOSTIC OR THERAPEUTIC USE.

**Abbreviation Key:**

mAb—Monoclonal Antibody pAb—Polyclonal Antibody WB—Western Blot IF—Immunofluorescence ICC—Immunocytochemistry  
 IHC—Immunohistochemistry E—ELISA Hu—Human Mo—Monkey Do—Dog Rt—Rat Ms—Mouse Co—Cow Pi—Pig Ho—Horse Ch—Chicken  
 Dr—D. rerio Dm—D. melanogaster Sm—S. mutans Ce—C. elegans Sc—S. cerevisiae Sa—S. aureus Ec—E. coli.

**FOR RESEARCH USE ONLY. NOT INTENDED FOR DIAGNOSTIC OR THERAPEUTIC USE.**

**Abbreviation Key:**

***mAb—Monoclonal Antibody pAb—Polyclonal Antibody WB—Western Blot IF—Immunofluorescence ICC—Immunocytochemistry IHC—Immunohistochemistry E—ELISA Hu—Human Mo—Monkey Do—Dog Rt—Rat Ms—Mouse Co—Cow Pi—Pig Ho—Horse Ch—Chicken Dr—D. rerio Dm—D. melanogaster Sm—S. mutans Ce—C. elegans Sc—S. cerevisiae Sa—S. aureus Ec—E. coli.***