



Ordering Information
 Web www.encorbio.com
 Email admin@encorbio.com
 Phone 352-372-7022
 Fax 352-372-7066

HGNC Name: NA
UniProt: P17967
RRID: AB_2156463
Immunogen: Yeast nuclear preparations
Format: Concentrated hybridoma cell culture media plus 5mM NaN₃
Storage: Store at 4°C for short term, for longer term at -20°C. Avoid freeze/thaw cycles.
Recommended dilutions:
 WB: 1:10,000. IF: 1:500-1:1,000

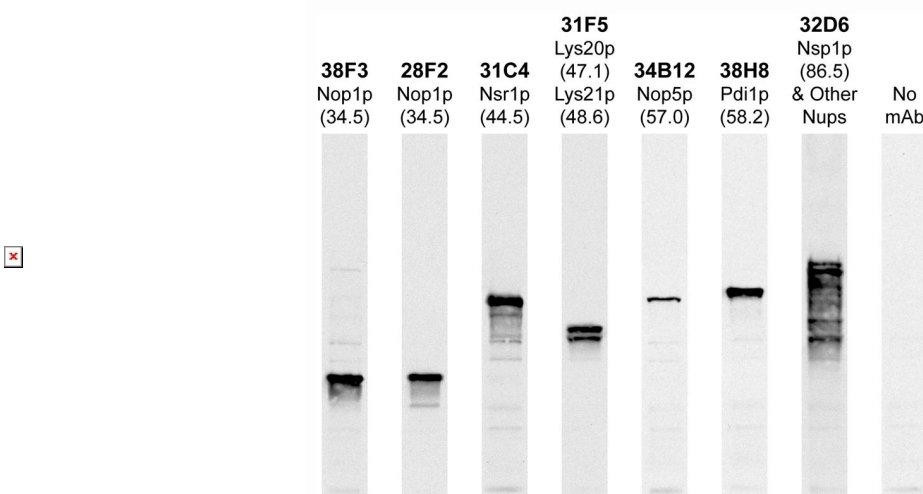
References:

1. Elrod-Erickson MJ1, Kaiser CA. Genes that control the fidelity of endoplasmic reticulum to Golgi transport identified as suppressors of vesicle budding mutations. *Mol. Biol. Cell* 7:1043-58 (1996).

Pdi1p Mouse Monoclonal Antibody

MCA-38H8

Applications	Host	Isotype	Molecular Wt.	Species Cross-Reactivity
WB, IF, IP	Mouse	IgG1	58.2kDa	Sc



Western blots of whole yeast protein extracts with a collection of EnCor antibodies directed against yeast proteins. The blot for MCA-38H8 is in the indicated lane, 6th from the left, and the number indicates the SDS-PAGE molecular weight in kiloDaltons.

Background:

Pdi1p is a yeast protein disulfide isomerase. It is a major endoplasmic reticulum protein with chaperone and co-chaperone activity, involved in retention of resident ER proteins. It also has a role in recognizing proteins targeted for ER-associated degradation (ERAD) and is a member of the protein disulfide isomerase family. Proteins in this family also can break disulfide bonds on substrate proteins. The protein is also known as Eps1p.

The MCA-38H8 antibody was generated by immunizing a mouse with a preparation of yeast nuclei followed by monoclonal antibody production. Western blots of yeast protein extracts probed with the MCA-38H8 antibody revealed a ~65kDa band, and immunofluorescence staining gave an endoplasmic reticulum staining pattern. The specificity of the antibody was determined by screening a yeast genomic expression library in phage λ-gt11. Four different clones from the library all contain different overlapping regions of Pdi1p. The Pdi1p protein is expressed in the endoplasmic reticulum and nuclear envelope of yeast cells.

FOR RESEARCH USE ONLY. NOT INTENDED FOR DIAGNOSTIC OR THERAPEUTIC USE.

Abbreviation Key:

mAb—Monoclonal Antibody **pAb**—Polyclonal Antibody **WB**—Western Blot **IF**—Immunofluorescence **ICC**—Immunocytochemistry
IHC—Immunohistochemistry **E**—ELISA **Hu**—Human **Mo**—Monkey **Do**—Dog **Rt**—Rat **Ms**—Mouse **Co**—Cow **Pi**—Pig **Ho**—Horse **Ch**—Chicken
Dr—*D. rerio* **Dm**—*D. melanogaster* **Sm**—*S. mutans* **Ce**—*C. elegans* **Sc**—*S. cerevisiae* **Sa**—*S. aureus* **Ec**—*E. coli*.

FOR RESEARCH USE ONLY. NOT INTENDED FOR DIAGNOSTIC OR THERAPEUTIC USE.

Abbreviation Key:

*mAb—Monoclonal Antibody pAb—Polyclonal Antibody WB—Western Blot IF—Immunofluorescence ICC—Immunocytochemistry
IHC—Immunohistochemistry E—ELISA Hu—Human Mo—Monkey Do—Dog Rt—Rat Ms—Mouse Co—Cow Pi—Pig Ho—Horse Ch—Chicken
Dr—D. rerio Dm—D. melanogaster Sm—S. mutans Ce—C. elegans Sc—S. cerevisiae Sa—S. aureus Ec—E. coli.*