

Ordering Information

Web www.encorbio.com
 Email admin@encorbio.com
 Phone 352-372-7022
 Fax 352-372-7066

HGNC Name: C3

UniProt: P01024

RRID: AB_2572257

Immunogen: Recombinant netrin domain of human C3 construct

Format: Purified antibody at 1mg/mL in 50% PBS, 50% glycerol plus 5mM NaN₃

Storage: Store at 4°C for short term, for longer term at -20°C

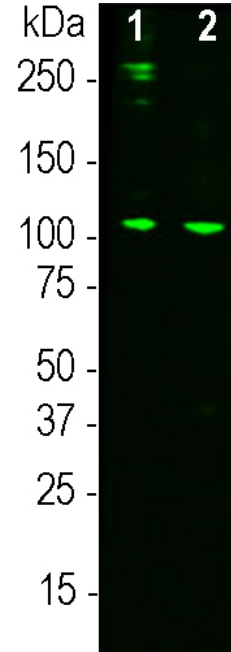
Recommended dilutions:

WB: 1:1,000-1:5,000.

References:

1. Janeway CA et al. *The complement system and innate immunity. The Immune System in Health and Disease. 5th edition (2001).*
2. Brade V, Hall RE, Colten HR. Biosynthesis of pro-C3, a precursor of the third component of complement. *J. Exp. Med.* 146:759-765 (1977).
3. Xia Z, ET AL. Acylation-stimulating Protein (ASP)/Complement C3adesArg Deficiency Results in Increased Energy Expenditure in Mice. *J. Biol. Chem.* 279:4051-7 (2004).
4. Maslowska M, et al. Plasma acylation stimulating protein, adipin and lipids in non-obese and obese populations. *Eur. J. Clin. Inv.* 29:679-86 (1999).
5. Koistinen HA, et al. Plasma Acylation Stimulating Protein Concentration and Subcutaneous Adipose Tissue C3 mRNA Expression in Nondiabetic and Type 2 Diabetic Men. *Arteriosclerosis, Thrombosis, and Vascular Biology* 21:1034-9 (2001).

Applications	Host	Isotype	Molecular Wt.	Species Cross-Reactivity
WB, ELISA	Mouse	IgG1	185kDa	Hu



Western blot analysis of MCA-2B5 on human serum samples. 0.1µg human C3 protein (lane 1), 10µg normal human serum proteins (lane 2) was blotted with MCA-2B5 at a concentration 1:3,000. The MCA-2B5 monoclonal binds strongly and cleanly to a band at about 115 kDa which represents the intact α subunit of C3 and a weaker proteolytic band at approximately 45kDa which is the C-terminal of the α subunit including the netrin domain. Bands at 190kDa and above are likely the pro-C3 and its glycosylated form.

Background Complement component 3, often simply called C3, is the third protein in the complement system. The complement system “complements” the ability of antibodies and phagocytic cells to clear pathogens such as bacteria and viruses from the organism and can trigger inflammation and remove debris from cells and tissues. C3 is involved in both the classical and alternative pathway. The MCA-2B5 antibody binds to the netrin-like domain in the α subunit of human C3.

FOR RESEARCH USE ONLY. NOT INTENDED FOR DIAGNOSTIC OR THERAPEUTIC USE.

Abbreviation Key:

mAb—Monoclonal Antibody **pAb**—Polyclonal Antibody **WB**—Western Blot **IF**—Immunofluorescence **ICC**—Immunocytochemistry
IHC—Immunohistochemistry **E**—ELISA **Hu**—Human **Mo**—Monkey **Do**—Dog **Rt**—Rat **Ms**—Mouse **Co**—Cow **Pi**—Pig **Ho**—Horse **Ch**—Chicken
Dr—*D. rerio* **Dm**—*D. melanogaster* **Sm**—*S. mutans* **Ce**—*C. elegans* **Sc**—*S. cerevisiae* **Sa**—*S. aureus* **Ec**—*E. coli*.