

### Ordering Information

Web [www.encorbio.com](http://www.encorbio.com)  
 Email [admin@encorbio.com](mailto:admin@encorbio.com)  
 Phone 352-372-7022  
 Fax 352-372-7066

**HGNC Name:** C3

**UniProt:** P01024

**RRID:** AB\_2572258

**Immunogen:** Recombinant netrin domain of human C3

**Format:** Purified antibody at 1mg/mL in 50% PBS, 50% glycerol plus 5mM NaN<sub>3</sub>

**Storage:** Store at 4°C for short term, for longer term at -20°C

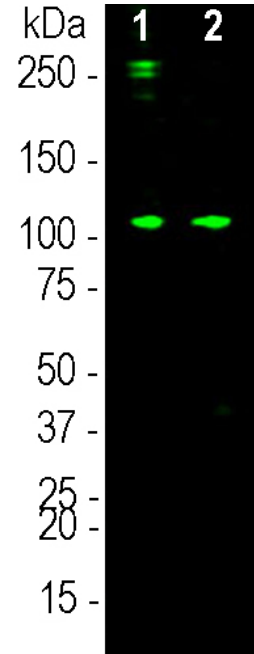
**Recommended dilutions:**

WB 1:1,000-1:5,000

### References:

1. Janeway CA et al. The complement system and innate immunity. *The Immune System in Health and Disease*. 5th edition (2001).
2. Brade V, Hall RE, Colten HR. Biosynthesis of pro-C3, a precursor of the third component of complement. *J. Exp. Med.* 146:759-765 (1977).
3. Xia Z, ET AL. Acylation-stimulating Protein (ASP)/Complement C3adesArg Deficiency Results in Increased Energy Expenditure in Mice. *J. Biol. Chem.* 279:4051-7 (2004).
4. Maslowska M, et al. Plasma acylation stimulating protein, adipisin and lipids in non-obese and obese populations. *Eur. J. Clin. Inv.* 29:679-86 (1999).
5. Koistinen HA, et al. Plasma Acylation Stimulating Protein Concentration and Subcutaneous Adipose Tissue C3 mRNA Expression in Nondiabetic and Type 2 Diabetic Men. *Arteriosclerosis, Thrombosis, and Vascular Biology* 21:1034-9 (2001).

Applications	Host	Isotype	Molecular Wt.	Species Cross-Reactivity
WB, ELISA	Mouse	IgG1	185kDa	Hu



Western blot analysis of MCA-6E8 on human serum samples. 0.1 μg purified human C3 protein (lane 1) and 10 μg normal human serum protein (lane 2) were blotted with MCA-6E8 at a concentration 1:3,000. The MCA-6E8 monoclonal binds strongly and cleanly to a band at about 115kDa which represents the intact α subunit of C3 and a weaker proteolytic band at approximately 40kDa. Bands at 190kDa and above are likely the pro-C3 and its glycosylated form.

**Background** Complement component 3, often simply called C3, is the third protein in the complement system. The complement system "complements" the ability of antibodies and phagocytic cells to clear pathogens such as bacteria and viruses from the organism and can trigger inflammation and remove debris from cells and tissues. C3 is involved in both the classical and alternative pathway. The MCA-6E8 antibody binds to the netrin-like domain in the α subunit of human C3.

FOR RESEARCH USE ONLY. NOT INTENDED FOR DIAGNOSTIC OR THERAPEUTIC USE.

### Abbreviation Key:

mAb—Monoclonal Antibody pAb—Polyclonal Antibody WB—Western Blot IF—Immunofluorescence ICC—Immunocytochemistry  
 IHC—Immunohistochemistry E—ELISA Hu—Human Mo—Monkey Do—Dog Rt—Rat Ms—Mouse Co—Cow Pi—Pig Ho—Horse Ch—Chicken  
 Dr—D. rerio Dm—D. melanogaster Sm—S. mutans Ce—C. elegans Sc—S. cerevisiae Sa—S. aureus Ec—E. coli.