

GAP 43

Rabbit Polyclonal Antibody

RPCA-GAP43

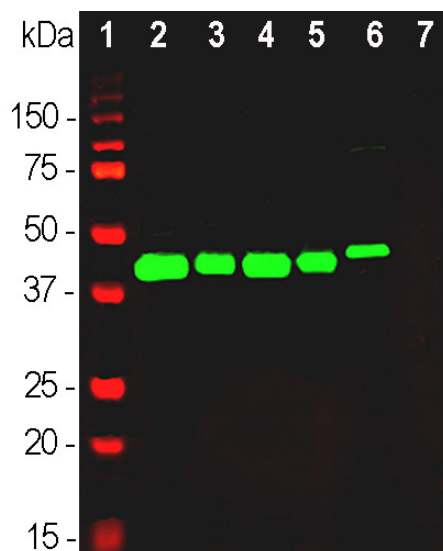
Ordering Information
 Web www.encorbio.com
 Email admin@encorbio.com
 Phone 352-372-7022
 Fax 352-372-7066

HGNC Name: GAP43
UniProt: P07936
RRID: AB_2572288
Immunogen: C-terminal peptide of rodent GAP43, KEDPEADQEHA coupled to KLH
Format: Affinity purified antibody at 1mg/mL in 50% PBS, 50% glycerol plus 5mM NaN₃
Storage: Store at 4°C for short term, for longer term store at -20°C
Recommended dilutions:
 WB: 1:10,000 IF/ICC and IHC: 1:1,000

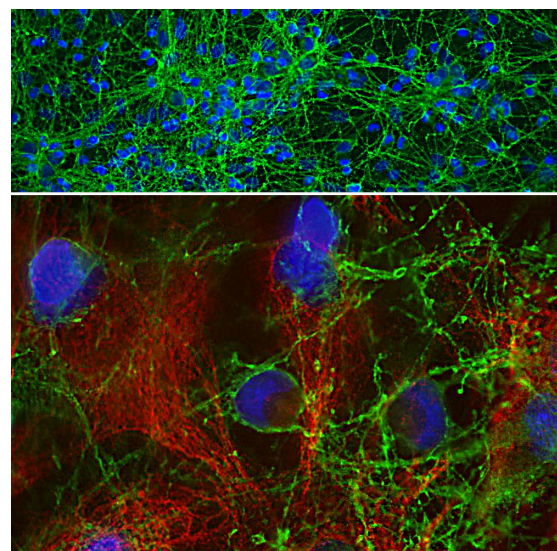
References:

1. Skene JH, Willard M. Changes in axonally transported proteins during axon regeneration in toad retinal ganglion cells. *J. Cell Biol.* 89:86-95 (1981).
2. Benowitz LI, Routtenberg A. GAP-43: an intrinsic determinant of neuronal development and plasticity. *Trends Neurosci.* 20:84-91 (1997).
3. Kosik KS, et al. Human GAP-43: its deduced amino acid sequence and chromosomal localization in mouse and human. *Neuron* 1:137-32 (1988).
4. Gauthier-Kempera A, et al. Interplay between phosphorylation and palmitoylation mediates plasma membrane targeting and sorting of GAP43. *Mol Biol Cell.* 25:3284-99 (2014).
5. Strittmatter SM, et al. Neuronal pathfinding is abnormal in mice lacking the neuronal growth cone protein GAP-43. *Cell* 80:445-52 (1995).
6. Wright PE, Dyson HJ. Intrinsically disordered proteins in cellular signalling and regulation. *Nat. Rev. Mol. Cell Biol.* 16:18-29 (2015).

Applications	Host	Isotype	Molecular Wt.	Species Cross-Reactivity
WB, IF/ICC, IHC	Rabbit		~43kDa by SDS-PAGE	Hu, Rt, Ms, Co, Pi, Ho



Western blot analysis of different tissue and cell lysates using rabbit pAb to GAP43, RPCA-GAP43, dilution 1:20,000 in green: [1] protein standard (red), [2] rat brain, [3] rat spinal cord, [4] mouse brain, [5] mouse spinal cord, [6] SH-SY5Y cells, [7] C6 cells. Single band at 43 kDa mark corresponds to GAP43 protein. The GAP43 protein is detected only in the lysates of neuronal origin. C6 cells are a rat glioma cell line and do not express GAP43 protein.



Immunofluorescent analysis of cortical neuron-glia cell culture from E20 rat stained with rabbit pAb to GAP43, RPCA-GAP43, dilution 1:2,000 in green, and costained with mouse mAb to vimentin, MCA-2A52, dilution 1:2,000, in red. The blue is DAPI staining of nuclear DNA. GAP43 antibody labels protein expressed in the axonal membrane of neuronal cells, while vimentin antibody stains intermediate filaments in fibroblasts and other non-neuronal cells.

Background:

GAP43 is an abundant protein which is found heavily concentrated in developing neurons, in particular at the growing tips, the growth cones. One group discovered it since it becomes unregulated during the regeneration of the toad optic nerve, and named it "growth associated protein 43", the 43 referring to the apparent molecular weight on SDS-PAGE gels (1). GAP43 is very highly charged and does not run on SDS-PAGE in a fashion which accurately reflects its molecular weight, since human GAP43 is 238 amino acids giving a real molecular weight 24.8kDa. The same GAP43 preparation will also give a different SDS-PAGE molecular weight depending on the percentage acrylamide content of the gel, the protein appearing relatively larger on gels with higher acrylamide concentration. GAP43 proteins from different species also may run at different apparent molecular weights on the same gel. Partly due to these unusual features GAP43 was independently discovered by several different groups and therefore has several alternate names, such as protein F1, pp46, neuromodulin, neural phosphoprotein B-50 and calmodulin-binding protein P-57, the numbers 46, 50 and 57 reflecting the apparent SDS-PAGE molecular weight (2). GAP43 is a major protein kinase C substrate and binds calmodulin avidly, this being mediated by an N-terminal **IQ calmodulin binding motif** (3). GAP43 may be anchored to the plasma membrane by reversible palmitoylation on two Cys residues close to the N-terminus (4). Knock out of the GAP43 gene in mice is lethal early in postnatal life and is associated with defects in axonal pathfinding (5). GAP43 is one of a large family of "intrinsically disordered proteins" which typically have little defined structure unless they are bound to a more structured partner (6).

The RPCA-GAP43 antibody was made against the C-terminal peptide of rodent GAP43 protein, KEDPEADQEHA and works on other mammalian species including human in which the corresponding peptide is the very similar EEEPEADQEHA. It binds strongly to growth cones and axonal processes of neurons in cell culture and to synaptic regions in sectioned material, including on formalin fixed paraffin embedded human material, see data under "Additional Info" tab. We also supply chicken polyclonal and mouse monoclonal antibodies to GAP43, [CPCA-GAP43](#), [MCA-3H14](#) and [MCA-5E8](#).

FOR RESEARCH USE ONLY. NOT INTENDED FOR DIAGNOSTIC OR THERAPEUTIC USE.

Abbreviation Key:

mAb—Monoclonal Antibody **pAb**—Polyclonal Antibody **WB**—Western Blot **IF**—Immunofluorescence **ICC**—Immunocytochemistry
IHC—Immunohistochemistry **E**—ELISA **Hu**—Human **Mo**—Monkey **Do**—Dog **Rt**—Rat **Ms**—Mouse **Co**—Cow **Pi**—Pig **Ho**—Horse **Ch**—Chicken
Dr—*D. rerio* **Dm**—*D. melanogaster* **Sm**—*S. mutans* **Ce**—*C. elegans* **Sc**—*S. cerevisiae* **Sa**—*S. aureus* **Ec**—*E. coli*.

FOR RESEARCH USE ONLY. NOT INTENDED FOR DIAGNOSTIC OR THERAPEUTIC USE.

Abbreviation Key:

*mAb—Monoclonal Antibody pAb—Polyclonal Antibody WB—Western Blot IF—Immunofluorescence ICC—Immunocytochemistry
IHC—Immunohistochemistry E—ELISA Hu—Human Mo—Monkey Do—Dog Rt—Rat Ms—Mouse Co—Cow Pi—Pig Ho—Horse Ch—Chicken
Dr—D. rerio Dm—D. melanogaster Sm—S. mutans Ce—C. elegans Sc—S. cerevisiae Sa—S. aureus Ec—E. coli.*