

**Ordering Information**  
 Web [www.encorbio.com](http://www.encorbio.com)  
 Email [admin@encorbio.com](mailto:admin@encorbio.com)  
 Phone 352-372-7022  
 Fax 352-372-7066

**HGNC Name:** GFAP  
**RRID:** [Pending](#)  
**Format:** 1mg/mL in 6M Urea  
**Storage:** Store at -20°C  
**UniProt:** [Q28115](#)

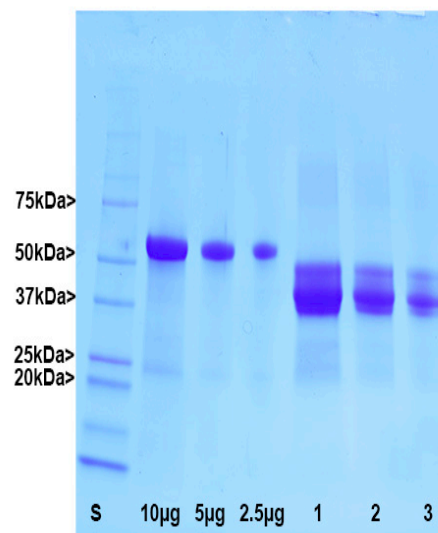
#### References:

1. Leung, C. L. and Liem, R. K. H. Isolation of intermediate filaments. *Curr. Prot. Cell Biol.* 3:Unit 3.23 doi: [10.1002/0471143030.cb0323s31](https://doi.org/10.1002/0471143030.cb0323s31) (2006).
2. Bignami A, Eng LF, Dahl D, Uyeda CT. Localization of the glial fibrillary acidic protein in astrocytes by immunofluorescence. *Brain Res.* 43:429-35 1972.
3. Brenner M. et al.. Mutations in GFAP, encoding glial fibrillary acidic protein, are associated with Alexander disease. *Nat Genet* 27:117-20 2001
4. Liem RKH, Yen SH, Salomon GD and Shelanski ML. Intermediate filaments in nervous tissues. *J Cell Biol* 79:637-745 (1978).
5. Moeton, M. et al. GFAP isoforms control intermediate filament network dynamics, cell morphology, and focal adhesions *Cell Mol Life Sci* 73:4101-4120 (2016).

## Purified bovine GFAP

## Prot-m-GFAP-bov

Applications	Host	Molecular Wt.	HGNC	UniPort
ELISA, western blotting standard	Cow	~50kDa	GFAP	<a href="#">Q28115</a>



GFAP was isolated from bovine spinal cord using the the method of Leung and Liem as far as the 6M urea/hydroxyapatite step (1). The material was then fractionated using a phosphate gradient on DEAE-cellulose in 6M urea, and GFAP rich fractions were concentrated. Lane marked S shows protein molecular weight standards of indicated size. Next three lanes show indicated amounts of BSA standard. Lanes 1, 2 and 3 show purified bovine GFAP, each with half the amount as the previous. There are multiple isotypes of GFAP generated by alternate transcription from a single gene (5), and there are several possible post-translational modifications of the expressed isoforms. As a result, these preparations do not show a single protein band, but several, all of which can be bound with most monoclonal antibodies to GFAP.

FOR RESEARCH USE ONLY. NOT INTENDED FOR DIAGNOSTIC OR THERAPEUTIC USE.

#### Abbreviation Key:

**mAb**—Monoclonal Antibody **pAb**—Polyclonal Antibody **WB**—Western Blot **IF**—Immunofluorescence **ICC**—Immunocytochemistry  
**IHC**—Immunohistochemistry **E**—ELISA **Hu**—Human **Mo**—Monkey **Do**—Dog **Rt**—Rat **Ms**—Mouse **Co**—Cow **Pi**—Pig **Ho**—Horse **Ch**—Chicken  
**Dr**—*D. rerio* **Dm**—*D. melanogaster* **Sm**—*S. mutans* **Ce**—*C. elegans* **Sc**—*S. cerevisiae* **Sa**—*S. aureus* **Ec**—*E. coli*.