

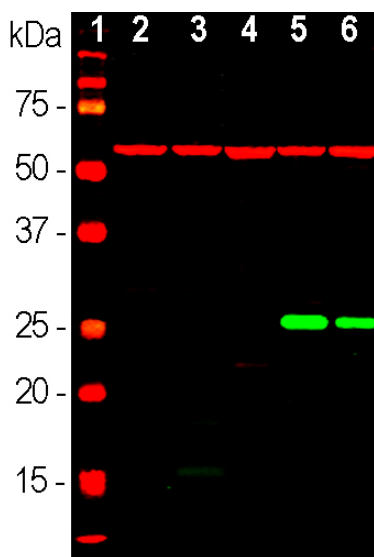
**Ordering Information**  
 Web [www.encorbio.com](http://www.encorbio.com)  
 Email [admin@encorbio.com](mailto:admin@encorbio.com)  
 Phone 352-372-7022  
 Fax 352-372-7066

**HGNC Name:** HSBP1  
**UniProt:** O75506  
**RRID:** AB\_2572329  
**Immunogen:** Recombinant full length human HSP27 expressed in and purified from *E. coli*  
**Format:** Purified antibody at 1mg/mL in 50% PBS, 50% glycerol plus 5mM NaN<sub>3</sub>  
**Storage:** Store at 4°C for short term, for longer term at -20°C  
**Recommended dilutions:**  
 WB: 1:10,000. IF/ICC and IHC: 1:1,000.

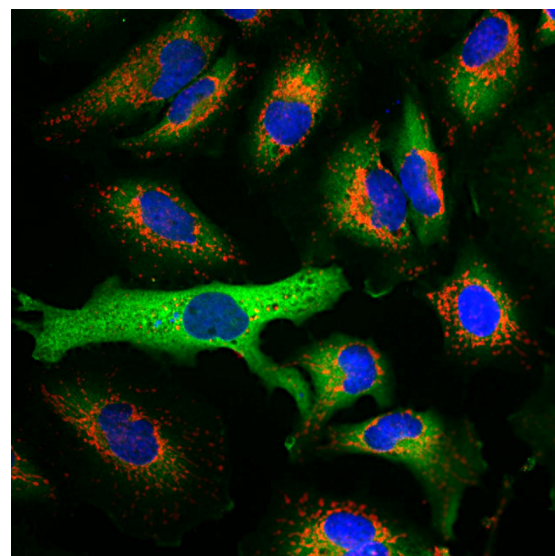
#### References:

- Wyttenbach, A et al. Heat shock protein 27 prevents cellular polyglutamine toxicity and suppresses the increase of reactive oxygen species caused by huntingtin. *Hum. Molec. Genet.* 11:1137-51 (2002).
- Evgrafov, OV et al. Mutant small heat-shock protein 27 causes axonal Charcot-Marie-Tooth disease and distal hereditary motor neuropathy. *Nature Genet.* 36:602-6 (2004).
- Bruey J-M, et al. Hsp27 negatively regulates cell death by interacting with cytochrome c. *Nat. Cell Biol.* 2:645-52 (2000).
- Guay J, et al. Regulation of actin filament dynamics by p38 map kinase-mediated phosphorylation of heat shock protein 27. *J. Cell Sci.* 110:357-68 (1997).
- Ciocca DR et al. Biological and Clinical Implications of Heat Shock Protein 27000 (Hsp27): a Review. *J. Natl. Cancer Inst.* 85:1558-70 (1993).
- Vidyasagar A, Wilson NA, Djamali A. Heat shock protein 27 (HSP27): biomarker of disease and therapeutic target. *Fibrogen. Tiss. Repair* 5:7 (2012).
- Ciocca DR, Calderwood SK. Heat shock proteins in cancer: diagnostic, prognostic, predictive, and treatment implications. *Cell Stress Chaperones* 10:86-103 (2005).

Applications	Host	Isotype	Molecular Wt.	Species Cross-Reactivity
WB, ICC/IF, IHC	Mouse	IgG1	27kDa	Hu, not rodent



Western blot analysis of different tissue or whole cell lysates using mouse mAb to HSP27, MCA-6H11, dilution 1:10,000, in green. [1] protein standard, [2] rat brain, [3] mouse brain, [4] NIH-3T3, [5] HEK293, [6] HeLa, [7] SH-SY5Y cells. Strong single band at ~27kDa corresponds to HSP27 protein, detected only in human cell lines, since this antibody is human specific. The blot was simultaneously probed with rabbit pAb to HSP60, [RPCA-HSP60](#), dilution 1:5,000 in red. A strong 60kDa band is present in all preparations.



Immunofluorescent analysis of HeLa cells stained with mouse mAb to HSP27, MCA-6H11, dilution 1:2,000 in green, and costained with chicken pAb to HSP60, [CPCA-HSP60](#), dilution 1:2,000 in red. Blue is DAPI staining of nuclear DNA. The MCA-6H11 antibody produces strong cytoplasm staining, while the HSP60 antibody specifically labels mitochondria.

#### Background:

The [heat shock proteins](#) were discovered since they are heavily upregulated when cells are stressed by temperatures above the normal physiological range. They are expressed in unstressed cells also and have a normal function as chaperones, helping other proteins to fold correctly, but are required in much greater amounts if the cell or tissue is stressed by heat. Heat shock protein 27 (HSP27) is an abundant protein which functions as a chaperone but has many other functions. Upregulation of this protein is protective against neurodegenerative diseases at least in certain mouse models (1). Point mutations in the HSP27 gene are associated with two neurological diseases, [Charcot-Marie-Tooth disease type 2F](#) and [distal hereditary motor neuropathy IIB](#) (2). These diseases are associated with axonal loss apparently following defects in the transport of neurofilaments. HSP27 may bind cytoplasmic cytochrome c released from mitochondria which would otherwise normally activate the caspase apoptotic cascade (3). HSP27 is a major phosphoprotein of cells primarily under the influence of the p38/SAP kinase and JNK pathways (e.g. 4). HSP27 is implicated in several other aspects of cell signaling and response to cancer and other diseases (5-7). The amino acid sequence of HSP27 is relatively poorly conserved across species boundaries, so there are 159 amino acid identities between human, cow, rat and mouse HSP27, out of 204-209 amino acids. This variability results in some antibodies being species specific while others work across many species.

The MCA-6H11 antibody was made against full length recombinant HSP27 expressed in and purified from *E. coli*. This antibody binds to an epitope on the human molecule missing from the rat and mouse homologue, likely variable peptides in the N and C terminal of human HSP27. As a result it can be used to identify human cells in a background of rodent cells. The antibody works well for western blotting and for IF, ICC and IHC on human material (for IHC see data under "Additional Info" tab). We also supply a chicken polyclonal antibody, [CPCA-HSP27](#), with similar properties, including the lack of recognition of the rodent HSP27. This suggests the existence of a potent human specific immunodominant epitope on human HSP27.

**FOR RESEARCH USE ONLY. NOT INTENDED FOR DIAGNOSTIC OR THERAPEUTIC USE.**

#### Abbreviation Key:

**mAb**—Monoclonal Antibody **pAb**—Polyclonal Antibody **WB**—Western Blot **IF**—Immunofluorescence **ICC**—Immunocytochemistry  
**IHC**—Immunohistochemistry **E**—ELISA **Hu**—Human **Mo**—Monkey **Do**—Dog **Rt**—Rat **Ms**—Mouse **Co**—Cow **Pi**—Pig **Ho**—Horse **Ch**—Chicken  
**Dr**—*D. rerio* **Dm**—*D. melanogaster* **Sm**—*S. mutans* **Ce**—*C. elegans* **Sc**—*S. cerevisiae* **Sa**—*S. aureus* **Ec**—*E. coli*.

**FOR RESEARCH USE ONLY. NOT INTENDED FOR DIAGNOSTIC OR THERAPEUTIC USE.**

**Abbreviation Key:**

***mAb—Monoclonal Antibody pAb—Polyclonal Antibody WB—Western Blot IF—Immunofluorescence ICC—Immunocytochemistry IHC—Immunohistochemistry E—ELISA Hu—Human Mo—Monkey Do—Dog Rt—Rat Ms—Mouse Co—Cow Pi—Pig Ho—Horse Ch—Chicken Dr—D. rerio Dm—D. melanogaster Sm—S. mutans Ce—C. elegans Sc—S. cerevisiae Sa—S. aureus Ec—E. coli.***